

FlashWrap® SPLIT PIPE BOOTS

PVC Low Slope Systems

OVERVIEW

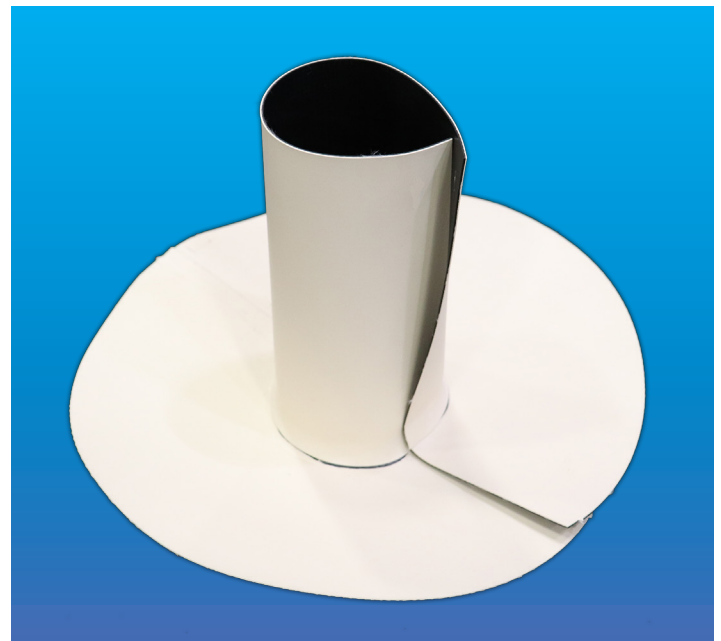
FlashCo's FlashWrap PVC Split Pipe Boots are Factory Certified prefabricated flashings made from 60 mil reinforced PVC membrane. They are designed to encircle common cylindrical penetrations where typical "closed" boots are unable to pass over obstructions like railings, crossbars, caps, collars, and other fittings. FlashCo offers a range of sizes from 1" in diameter to 6" in diameter. The standard riser height is 8".

Custom sizes & colors available.

INSTALLATION

FlashWraps shall be installed in accordance with the recommendations and specifications of the roofing material manufacturer.

1. Prepare all welding surfaces by cleaning with PVC membrane cleaner.
2. Wrap flashing around penetration and mark at top of flashing riser and remove.
3. Apply a bead of water cut-off mastic (provided by others) completely around the penetration just below the mark.
4. Wrap flashing around the penetration pulling the vertical seam together and heat weld vertical overlap using the penetration as backing.
5. Heat weld the base flange to the deck and complete the horizontal overlap weld.
6. Install stainless steel hose clamp (sold separately) at top of flashing riser providing constant compression on the sealant.
7. After the flashing has cooled, probe welds to verify a secure bond.



FEATURES AND BENEFITS

- Saves up to 60% of labor
- NDL and discretionary jobs
- Easy to install with obstructions

SAVING THE CONTRACTOR TIME

- FlashCo strives to ship 90% of orders within 1-3 days after purchase orders are placed
- All major membrane manufacturer brands in stock in all five FlashCo plant locations
- Get off the roof sooner
- Reduce installed costs

STANDARD SIZES & PACKAGING

Description	Effective Range	Qty/Box	Wt./Box	Box Size
1" Round	¼" – 1"	12	5.2 lbs.	12"x12"x12"
2" Round	1" – 2"	12	5.2 lbs.	12"x12"x12"
3" Round	2" – 3"	12	6.0 lbs.	16"x16"x12"
4" Round	3" – 4"	12	6.8 lbs.	18"x18"x18"
5" Round	4" – 5"	8	6.8 lbs.	18"x18"x18"
6" Round	5" – 6"	8	7.6 lbs.	18"x18"x18"

*Standard riser height is 8"
Also available in custom sizes & colors*

