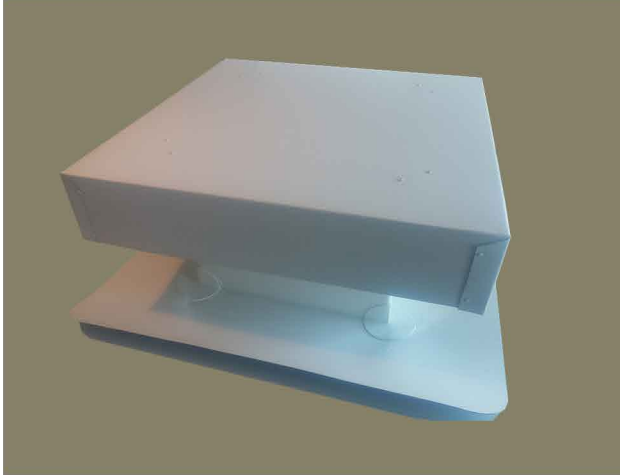


Gravity Vent

Ventilation System



Description

FlashCo's Gravity Vent allows free flowing air to the vented area. The innovative vent design is constructed with material that is 100% compatible with the installed roofing system, making for fast and easy installation. Gravity Ventilation allows air movement without powered ventilators. FlashCo's Gravity Vent is designed with a structurally sound sub base allowing hood to securely fasten.

Intended Uses

The Gravity Vent is commonly used as a means to allow heat or contaminant air to exit the vented space and aid in avoiding exhaust and heat buildup. Natural ventilation is most effective with strategic placement around the structure to maximize wind force and thermal buoyancy. These vents are specifically intended for use on low slope roofing systems. Color is typically ordered to match or closely match the color of the roofing system.

Standard Sizes

Size	NFA
12 x 12	128 sq in
18 x 18	198 sq in
24 x 24	264 sq in

Features and Benefits

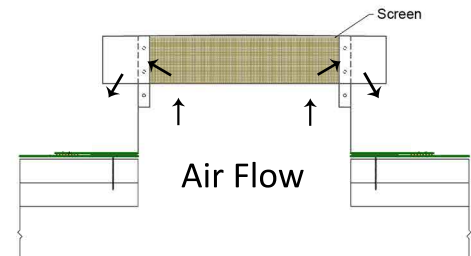
- Pre-fabricated weld-able flange for quick and easy installation
- Available in desired colors
- 100% compatible with roofing system
- Vandal proof Hood
- Strong internal support design
- Extra-large capacity
- Available in standard and custom sizes

Applications

Applications include single ply low slope roofing systems such as; Thermoplastic Polyolefin (TPO), Polyvinyl Chloride (PVC), Ketone Ethylene Ester (KEE), and Ethylene Propylene Diene Monomer (EPDM). Attachment methods are mechanically fastened, fully adhered, and ballasted.

Packaging

Store material in a cool, dry area away from sources of physical damage and chemical contamination. Packaged bulk.



Typical Properties and Characteristics

Description	Mat'l	Thickness	Color
Reinforced Membrane	TPO/PVC	.060" (60 mil)	White, Gray, Tan, Custom Available
Sub Base	Coated Metal	.059"	White, Gray, Tan, Custom Available
Hood	Kynar Coated Metal	26 Ga./019"	White, Gray, Tan, Custom Available

Innovative Flashings Saving the Contractor Time Since 2000

866-323-5274 * 150 Todd Road, Suite 400 * Santa Rosa, CA 95407 * Fax: 707-824-5858 * FlashCoMfg.com

FlashCo[®] is a trademark of FlashCo Manufacturing, Inc. ©2017

