

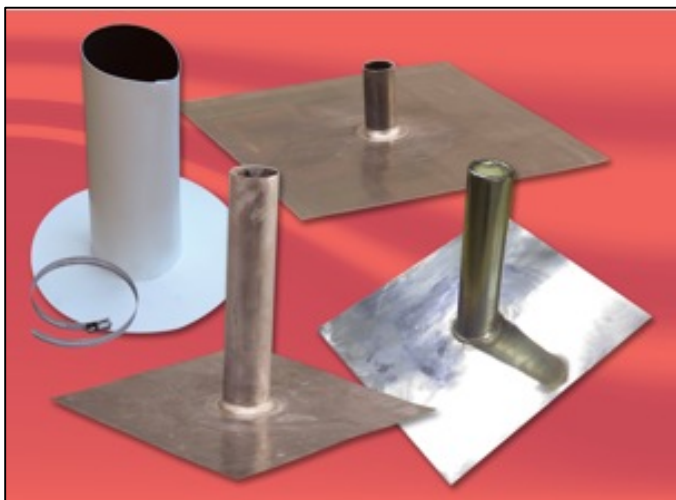
FlashCo's®

Cylindrical Flashing



Cylindrical Penetration and Protrusion Flashing

Trade Names: Roof Flashing, Pipe Flashing, Pipe Boot, Solar Flashing, Roof Jack, Plumbers Flashing, Plumbers Boot, Pipe Vent Flashing



Description

Cylindrical Pipe Penetration Flashings are fabricated using a variety of materials. FlashCo manufactures standard cylindrical boots and flashings using 60 mil reinforced TPO and PVC single ply membrane and various metals such as 4 pound Lead, 16 ounce Copper, 26 gauge Zinc and 24 gauge G-90 coated Galvanized Steel.

Intended Uses

Cylindrical flashings are used for pipe penetrations such as plumbing vents and for protrusions such as solar stanchions. Cylindrical flashings are designed to just fit over the penetration or protrusion. Flashings are used to “flash” or waterproof a penetrations and protrusions on roofs effectively *tying* the flashing into the roofing system. Cylindrical flashings are commonly used on a low slope and steep slope roofs. Caulking and a stainless steel hose clamp can be used to counter flash or as an alternative a separate counter flashing is used such as a storm collar or cap. See FlashCo's FlashCap™ Product Data Sheet.

Features and Benefits

Prefabricated cylindrical flashings save the contractor time in the field eliminating the need to field fabricate. A factory fabricated part is of higher quality because it is fabricated in a controlled environment and has a warranty. Cylindrical shaped flashings offer an aesthetically pleasing appearance as they blend in better than its conical counterpart. Cylindrical flashings parallel the shape of the penetration and protrusion minimizing airspace and the potential for condensation. Cylindrical shaped flashings are offered in standard pipe sizes and made to (90) degree angle or to the angle or pitch specified.

Application

Installation of cylindrical flashings shall be installed in accordance with the recommendations and specifications of the roofing material manufacturer or architect. The cylindrical shaped flashings that FlashCo fabricates are typically for TPO, PVC, Built up Roofing, and most residential systems.

Storage and Packaging

Store material in a dry area away from sources of physical damage and chemical contamination. Standard Single-Ply boots are typically packaged in plastic bags and boxed. Metal flashings are usually packaged loose on a pallet or in a crate.

Typical Properties and Characteristics

Material Type	Nominal Thickness	Thickness Inches	Weight/ Sq. Foot
TPO	60 mil	.060"	.25 lbs.
PVC	60 mil	.060"	.25 lbs.
Lead	4 Pound	.063"	4 lbs
Copper	16 Ounce	.022"	1 lb
Zinc	26 Gauge	.019"	.77 lbs
Galv G90	26 Gauge	.022"	.91 lbs
Galv G90	24 Gauge	.028"	1.16