

FlashVent

for Single-Ply Roofing Systems

—No Field Fabrication Required—

Installs in minutes with just 2 quick steps:

1. Fasten sub base
2. Heat weld

**LABOR
SAVER!
Installs in
a Flash!**

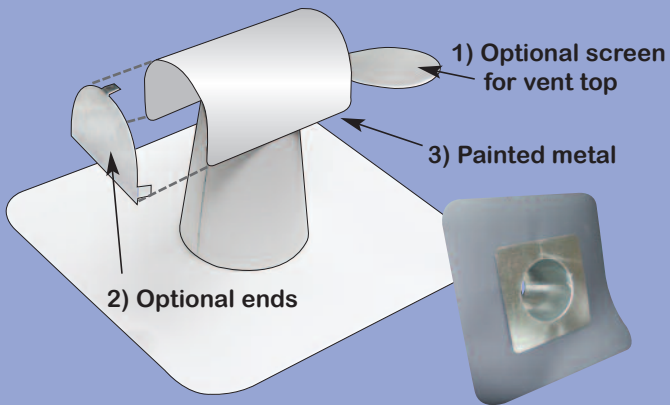
TPO or PVC; White, Gray and Tan

T-Top Vent

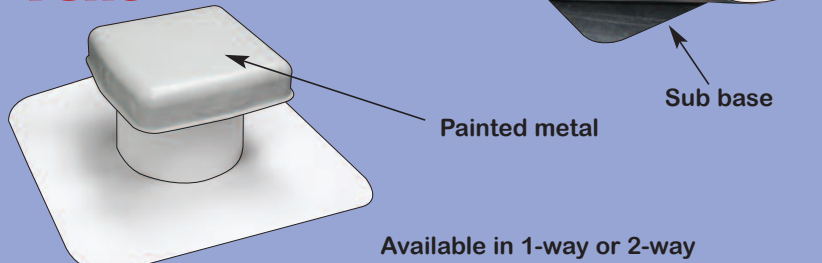
Standard Sizes: 4", 6" and 8"

Options:

- 1) Screen at vent opening
- 2) Ends or "ears"

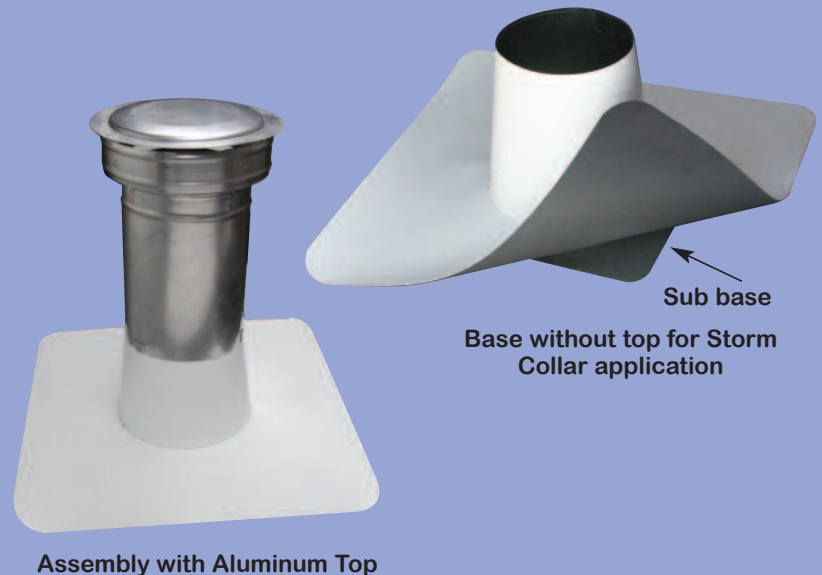


8" Square Top Vent



Exhaust Vent

Standard Sizes: 4", 6" and 8"

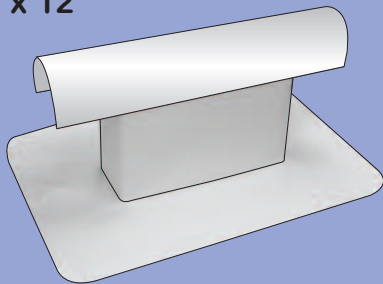


T-Top Box Vent

Standard Size: 4" x 12"

Options:

- 1) Screen at vent opening
- 2) Ends or "ears"



Toll Free: (866) 323-5274

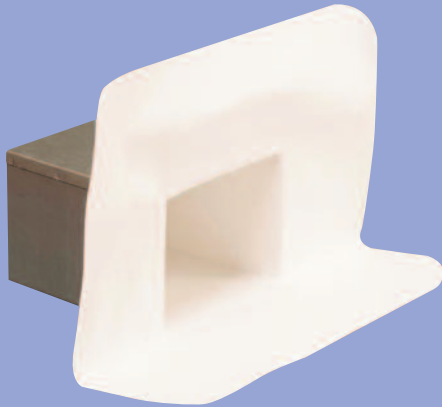
Saving the Roofing Contractor Time • www.flashcomfg.com

FlashCo® Accessories for Single-Ply Roofing Systems

–No Field Fabrication Required–
Installation time significantly reduced with prefabricated parts

Available in TPO or PVC; White, Gray and Tan

SCUPPERS

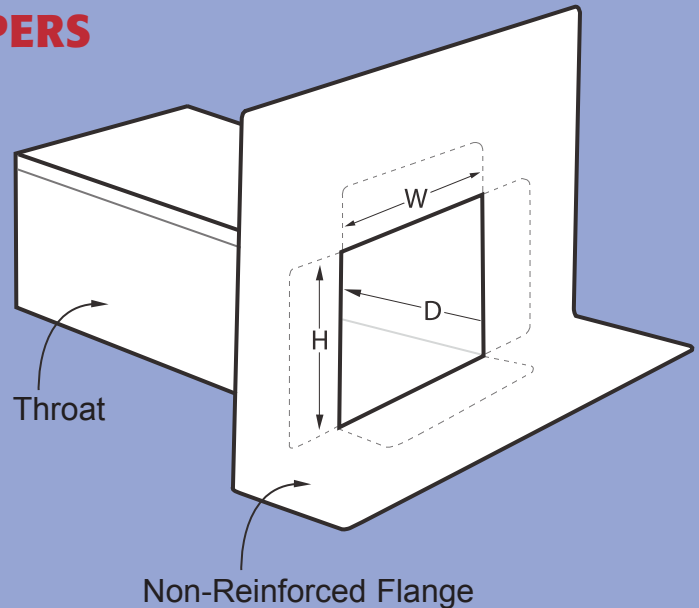


SPEC SHEET
AVAILABLE ONLINE

Prefabricated Scuppers are serious time savers and usually ship within a day or two.

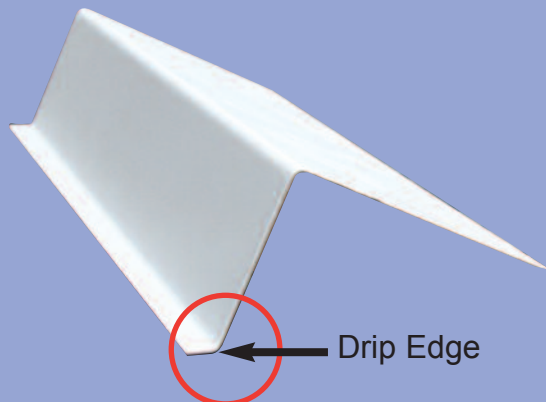


Fill out our drawing online and send in.



CLADDED EDGE METAL

- Standard Length: 10'
- Edge metal sold in bundles of 10



SEALANT POCKETS

- Standard Sizes: 4", 6" and 8"
- Other sizes available

SPEC SHEET
AVAILABLE ONLINE

