

PLUMBERS FLASHINGS

FlashCap®

Item Number	Size
SP_PF-225	1 1/2"
SP_PF-275	2"
SP_PF-375	3"
SP_PF-475	4"



SPEC SHEET
AVAILABLE ONLINE

Specify Membrane (SP_): T = TPO; P = PVC
 Note: Size based on Standard Vent Pipe.
 Available in White, Tan or Gray



Cylindrical Plumbing Boots

Item Number	Size (Standard Pipe Size)
SP_P-0100	1/2"
SP_P-0125	3/4"
SP_P-0150	1"
SP_P-0225	1 1/2"
SP_P-0275	2"
SP_P-0325	2 1/2"
SP_P-0375	3"
SP_P-0475	4"
SP_P-0588	5"
SP_P-0688	6"
SP_P-9999	Specify Size



SPEC SHEET
AVAILABLE ONLINE

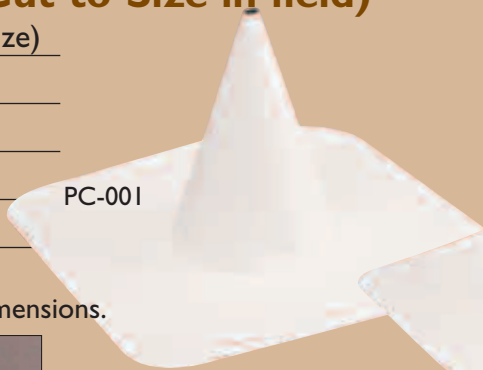


Specify Membrane (SP_): T = TPO; P = PVC
 Note: Available in any riser height and base size.
 Available in White, Tan or Gray



Conical Plumbing Boots (Cut-to-Size in field)

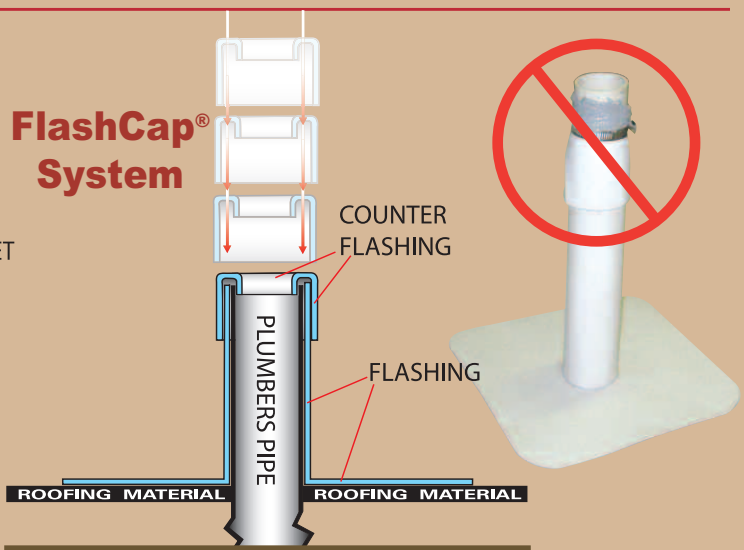
Item Number	Size (Standard Pipe Size)
SP_PC-001	1/2" - 2"
SP_PC-002	2 1/2" - 4"
SP_PC-003	5" - 6"
SP_PC-999	Specify Size



Specify Membrane (SP_): T = TPO; P = PVC
 Note: Conical flashings available per your dimensions.
 Available in White, Tan or Gray



FlashCap® System



The FlashCap® system eliminates the need for hose clamp and caulking, reduces installation time, is a better seal, and looks better.



EXHAUST FLASHINGS

Exhaust Boots with Sub-Base and Top

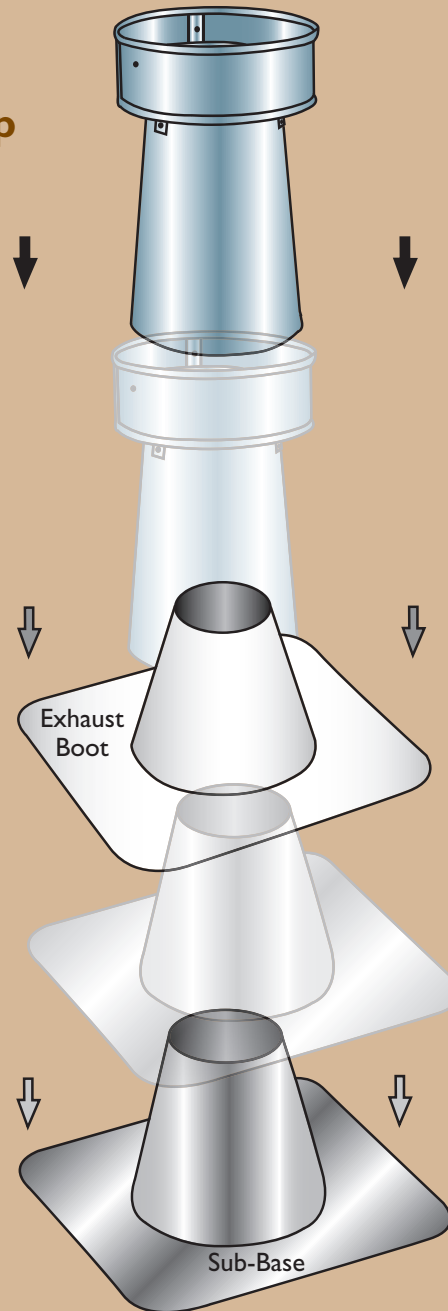
Item Number	Size
SP_ES-0375	3" Sub-Base
SP_ES-0475	4" Sub-Base
SP_ES-0675	6" Sub-Base
SP_ES-0875	8" Sub-Base
SP_ES-1075	10" Sub-Base
SP_ES-1275	12" Sub-Base

SP_E-0375	3" Boot Flashing
SP_E-0475	4" Boot Flashing
SP_E-0675	6" Boot Flashing
SP_E-0875	8" Boot Flashing
SP_E-1075	10" Boot Flashing
SP_E-1275	12" Boot Flashing

TG30N	3" Top, Short
TA30	3" Top, Tall
TG40N	4" Top, Short
TA40	4" Top, Tall
TG60N	6" Top, Short
TA60	6" Top, Tall
TG80N	8" Top, Short
TA80	8" Top, Tall

Note: Size based on Standard Vent Pipe.
Specify Membrane (SP_): T = TPO; P = PVC
Note: Items sold separately or as an assembly.
Other sizes made to order.

Available in White, Tan or Gray



SPEC SHEET
AVAILABLE ONLINE

VENT FLASHINGS

Vent Flashing

Item Number	Size
SP_V-0800	8"

Specify Membrane (SP_): T = TPO; P = PVC
 Note: Size based on Standard Vent Pipe.
 Available in White, Tan or Gray; top is primed metal.



DRAIN FLASHINGS & DROP OUTLETS

Drain Boots

Item Number	Size (Standard Pipe/Drain Size)
SP_D-002	2"
SP_D-003	3"
SP_D-004	4"
SP_D-999	Specify Size

Drop Outlets

Item Number	Size (Standard Pipe/Drain Size)
SP_DO-002	2"
SP_DO-003	3"
SP_DO-999	Specify Size

Specify Membrane (SP_): T = TPO; P = PVC
 Available in White, Tan or Gray



FLASHWRAP™ SPLIT FLASHINGS

Split Flashings for Round Penetrations

Item Number	Size
SP_SR01	1/4" to 1"
SP_SR12	1" to 2"
SP_SR23	2" to 3"
SP_SR34	3" to 4"
SP_SR45	4" to 5"
SP_SR56	5" to 6"
SP_SR99	Specify Size

SPEC SHEET
AVAILABLE ONLINE

Specify Membrane (SP_): T = TPO; P = PVC
 Note: Stainless Steel Clamping Ring Available
 Note: Size based on outside diameter of the penetration.
 Available in White, Tan or Gray



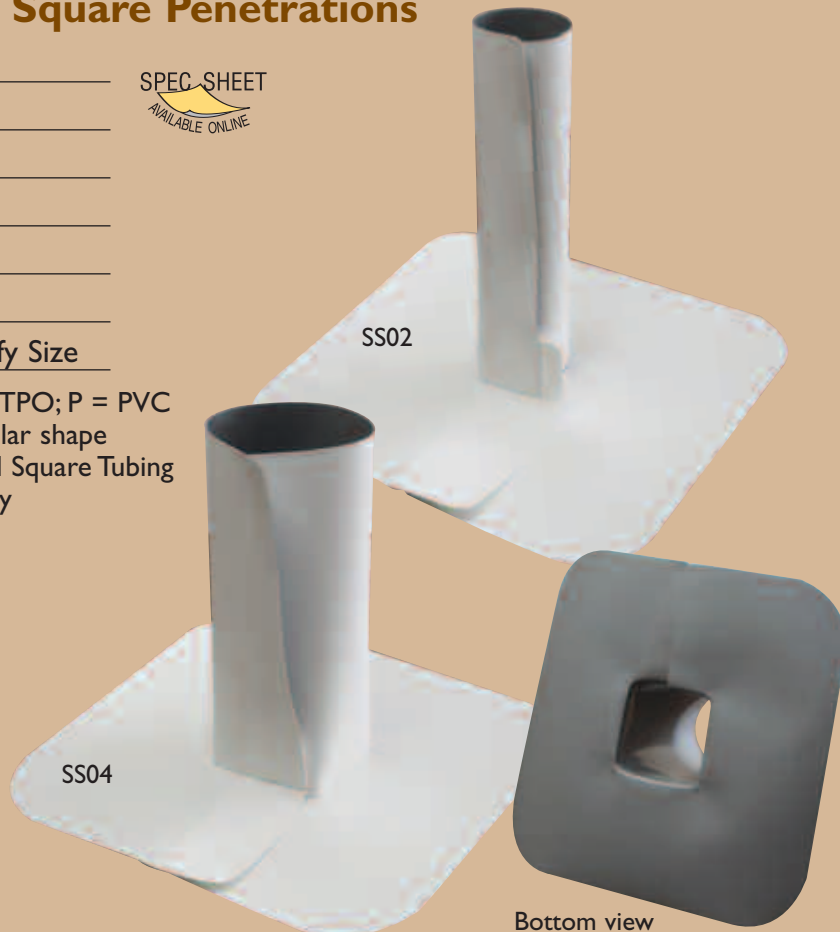
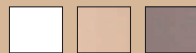
Bottom view

Split Flashings for Square Penetrations

Item Number	Size
SP_SS02	2"
SP_SS03	3"
SP_SS04	4"
SP_SS05	5"
SP_SS06	6"
SP_SS99	Specify Size

SPEC SHEET
AVAILABLE ONLINE

Specify Membrane (SP_): T = TPO; P = PVC
 Note: Available with rectangular shape
 Note: Size based on Standard Square Tubing
 Available in White, Tan or Gray

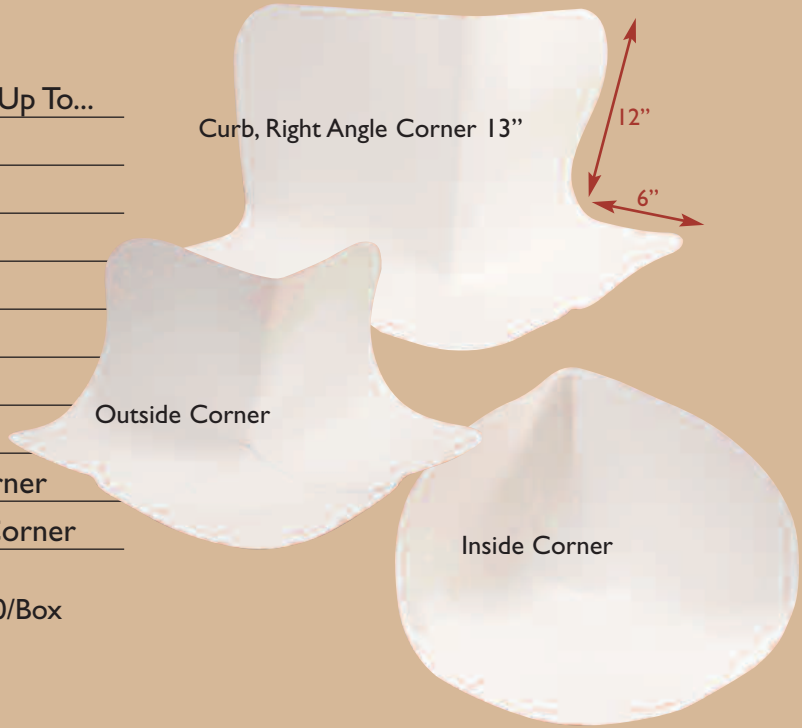


Bottom view

Curb Wraps and Corners

Item Number	Size	Fits Curb Up To...
SP_CB-07	7"	12" x 12"
SP_CB-13	13"	24" x 24"
SP_CB-19	19"	36" x 36"
SP_CB-25	25"	48" x 48"
SP_CB-31	31"	60" x 60"
SP_CB-37	37"	72" x 72"
SP_CB-99	Specify Size	
SP_CRNI	6"	Inside Corner
SP_CRNO	6"	Outside Corner

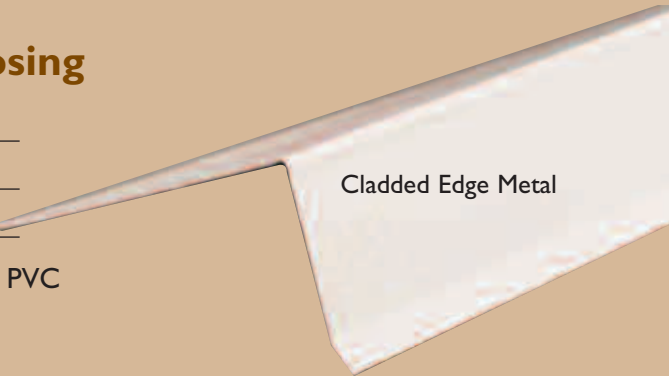
Specify Membrane (SP_): T = TPO; P = PVC
 Packaged; Curbs 4/Box or 12/Box; Corners 10/Box
 Note: 4 pcs. per curb
 Available in White, Tan or Gray



Cladded Edge Metal/Nosing

Item Number	Size
SP_-CM0202120	2" x 2" x 10'
SP_-CM0204120	2" x 4" x 10'

Specify Membrane (SP_): T = TPO; P = PVC
 Packaged 10/Bundle
 Available in White, Tan or Gray



Single-Ply Accessories

- FlashGuard™ Snow Guard Covers and Caps
- Pourable Sealant Pocket
- Scuppers
- T-Joint Patches

